



### Property Amenities:

- Multi-Level Atrium Clubhouse
- Renovated 24 Hour Fitness Center
- Business Center
- Oversized Pool with Sundeck
- Lighted Tennis Court
- Media Room
- On-Site Management
- 24 Hour Maintenance
- Child Care Service
- Pet Friendly Community
- Wireless Internet Cafe
- Bark Park

### NEIGHBORHOOD

- Minutes from South County Center, with dozens of specialty stores, restaurants and entertainment.
- 7 minutes from St. Anthony's Medical Center
- 2 minutes from Suson Park
- Quiet, wooded, suburban setting



## Southmoore Apartments

South St. Louis County  
5182 Golf Ridge Lane  
St. Louis, MO 63128

### Spacious Living on 30 acres in South St. Louis County

Southmoor Apartment homes offer spacious designs and top amenities, accompanied by beautiful surroundings. Season activities, combined with a great staff, convenient location and the superior service of St. Louis Corporate Housing make your stay a pleasant one.

### Unit Types:

- Lofts
- 2 Bedroom
- 1 Bedroom
- 3 Bedroom

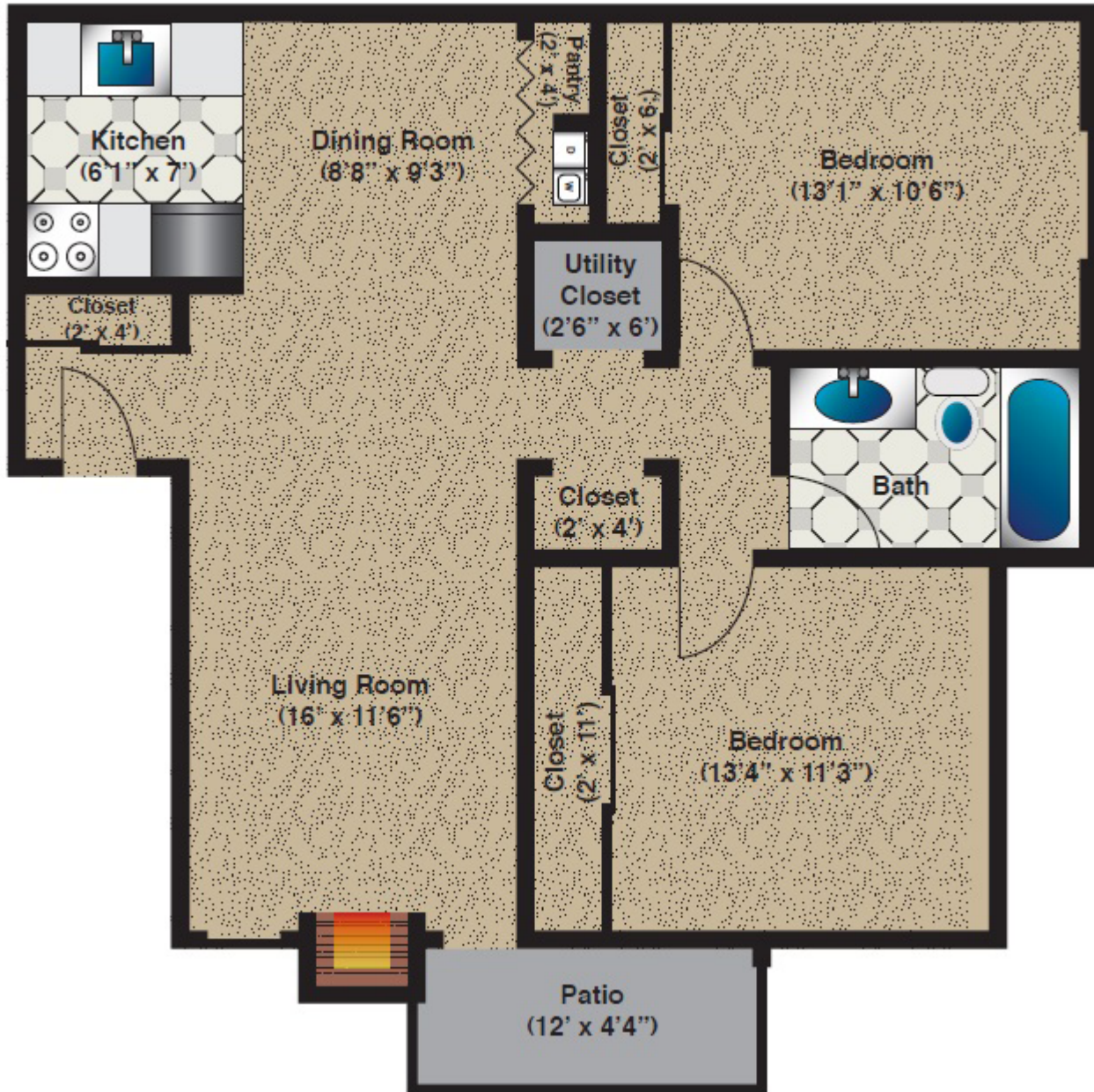
### STLCH.com Amenities:

- 40 inch or larger HDTV
- High-Speed Wireless Internet
- 50+ Movie Channels
- DVD/Blu-ray Player w/wifi
- Sofa, chair, tables
- Beds, nightstands
- Complete Kitchen Furnishings

### Unit Amenities:

- Fireplaces
- Walk-in Closets
- Updated Light Fixtures
- Updated Countertops
- Fully-Equipped Kitchens
- Glass-Tiled Back Splash
- Updated Appliances
- Large Balconies & Patios
- Ceiling Fans
- Wood Flooring

**Southmoor Apartments**  
**2 Bedroom, 1 Bath Floorplan - The Ruby**



921 Square Feet